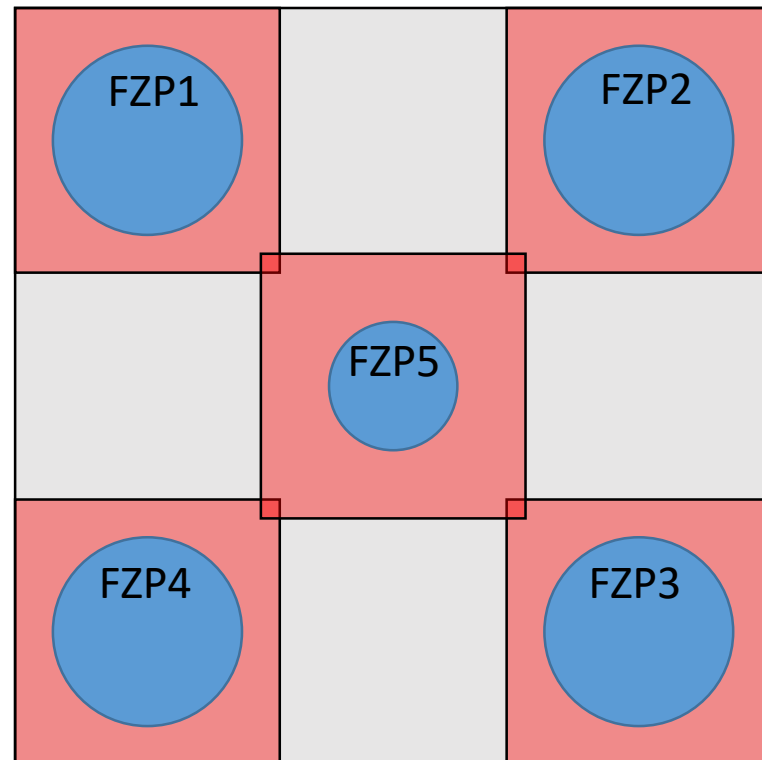


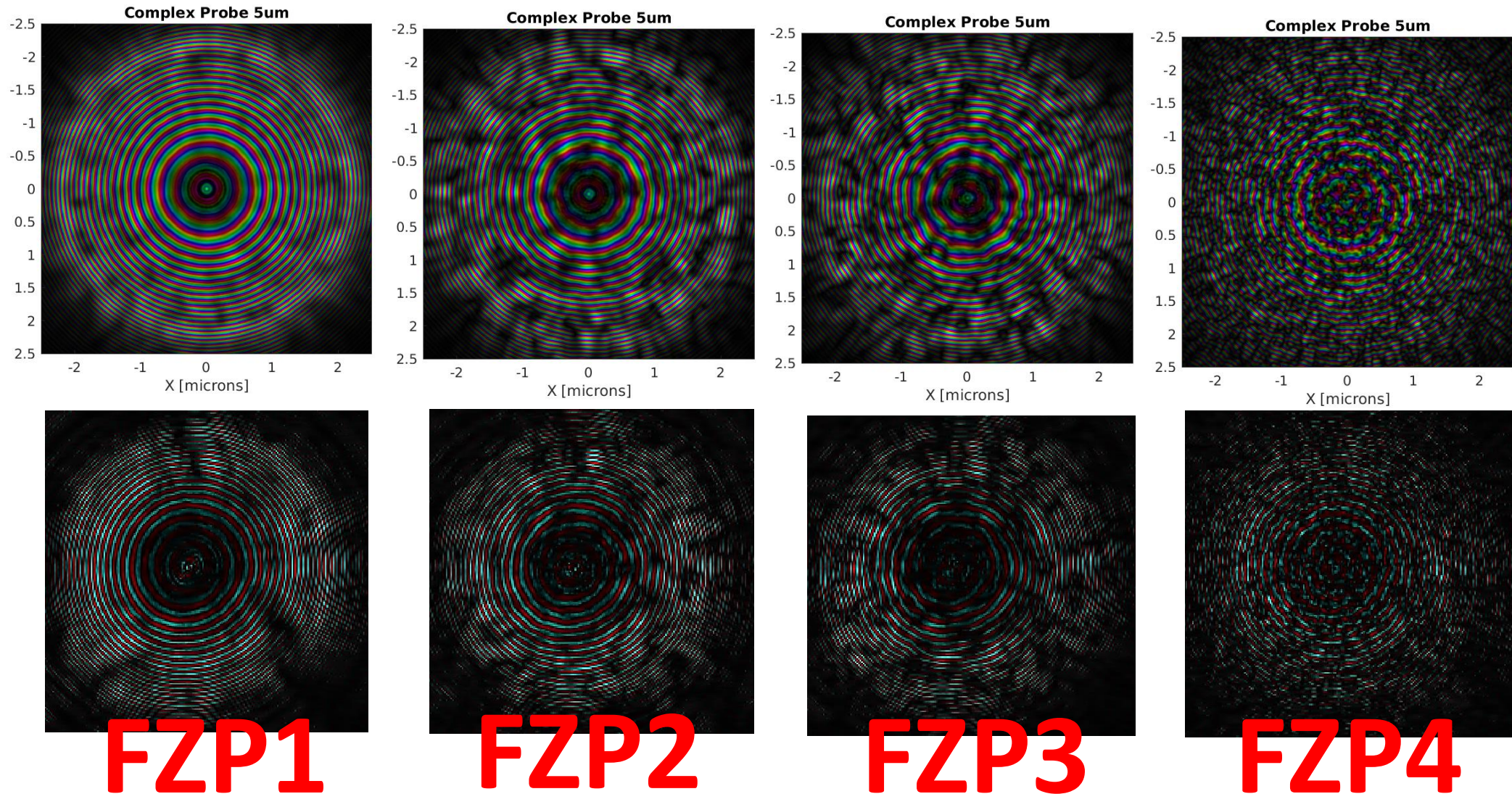
Aberrated 30 nm zoneplates

2022 05 22

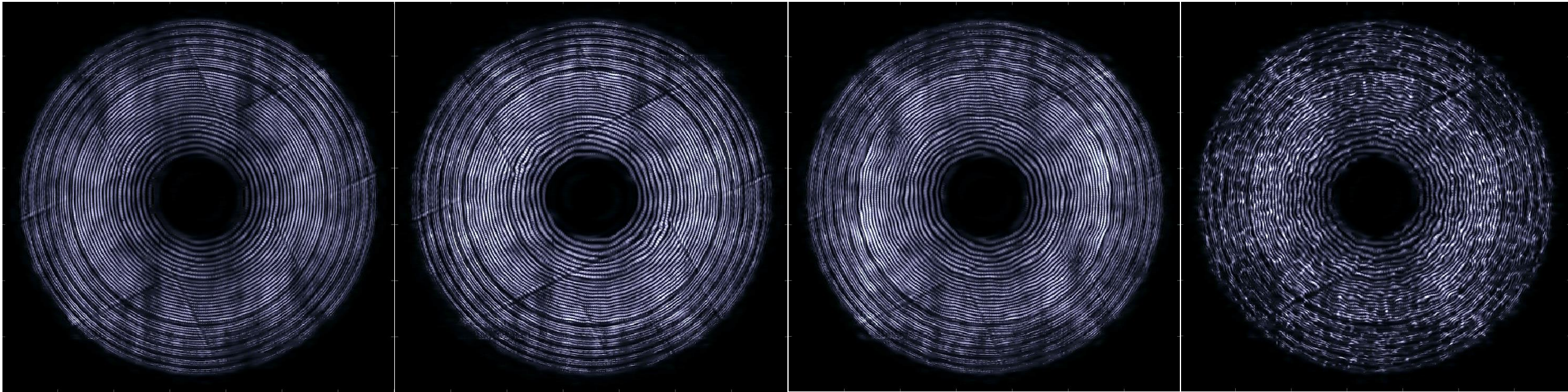
Name	Diameter	Zone width	Amp	k_x	E	Phase min	Phase max
FZP1	250 μm	30nm	30nm	0.4 μm^{-1}	6.2keV	-0.787	0.875
FZP2	250 μm	30nm	90nm	0.4 μm^{-1}	6.2keV	-2.441	2.443
FZP3	250 μm	30nm	120nm	0.4 μm^{-1}	6.2keV	-3.257	3.627
FZP4	250 μm	30nm	180nm	0.8 μm^{-1}	6.2keV	-5.463	5.943
FZP5	170 μm	30nm	60nm	0.4 μm^{-1}	9keV	2.222	3.073



Top: simulated probe, bottom: reconstructed probe. Probes seem to match what we ordered.



Reconstructed probe propagated to the farfield

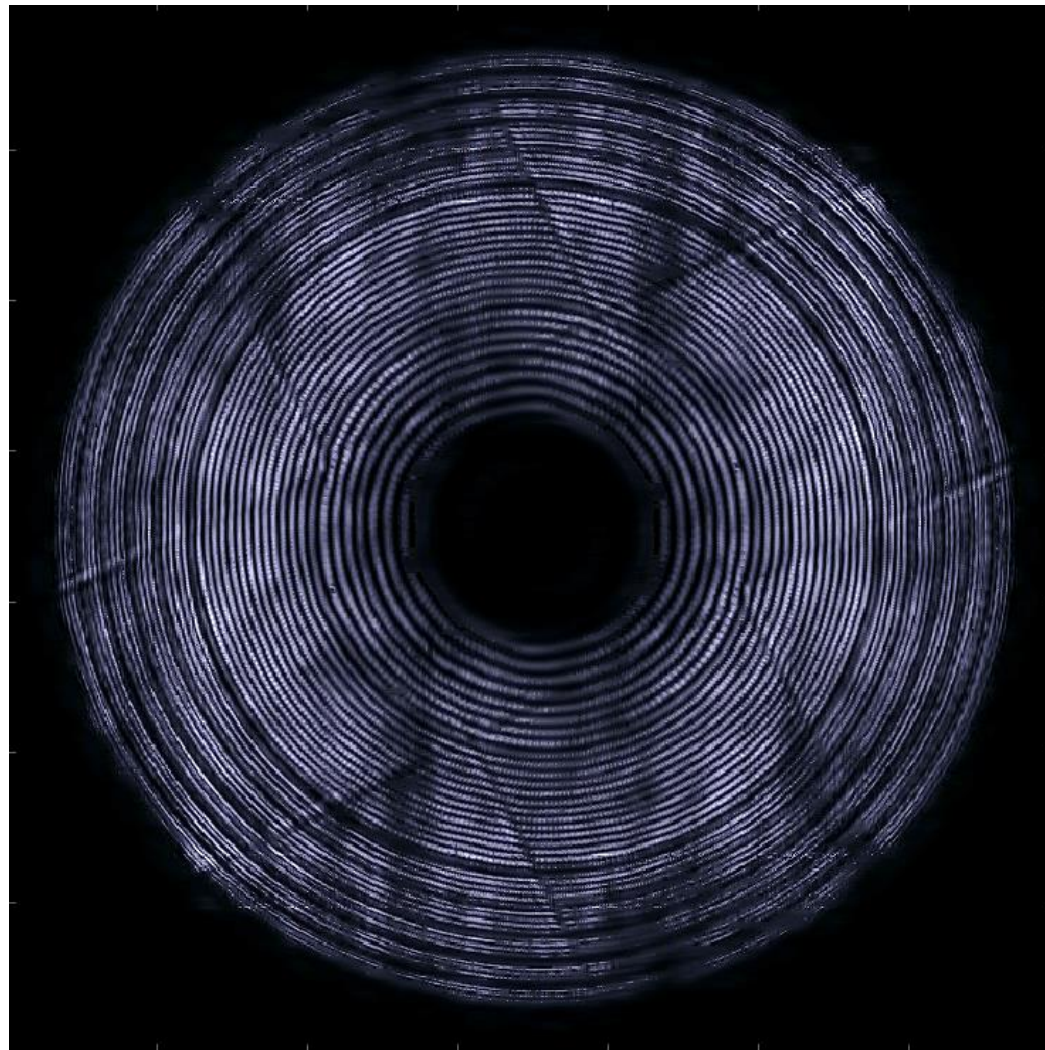
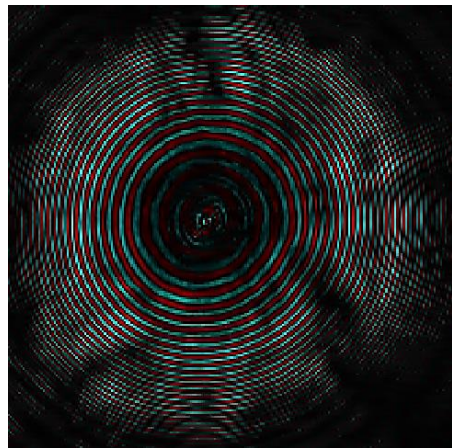
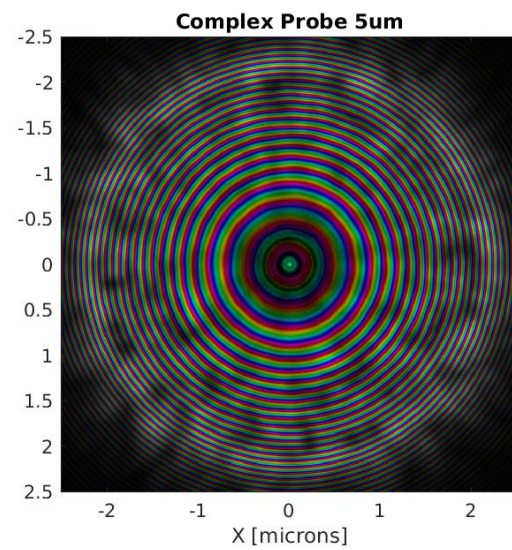


FZP1

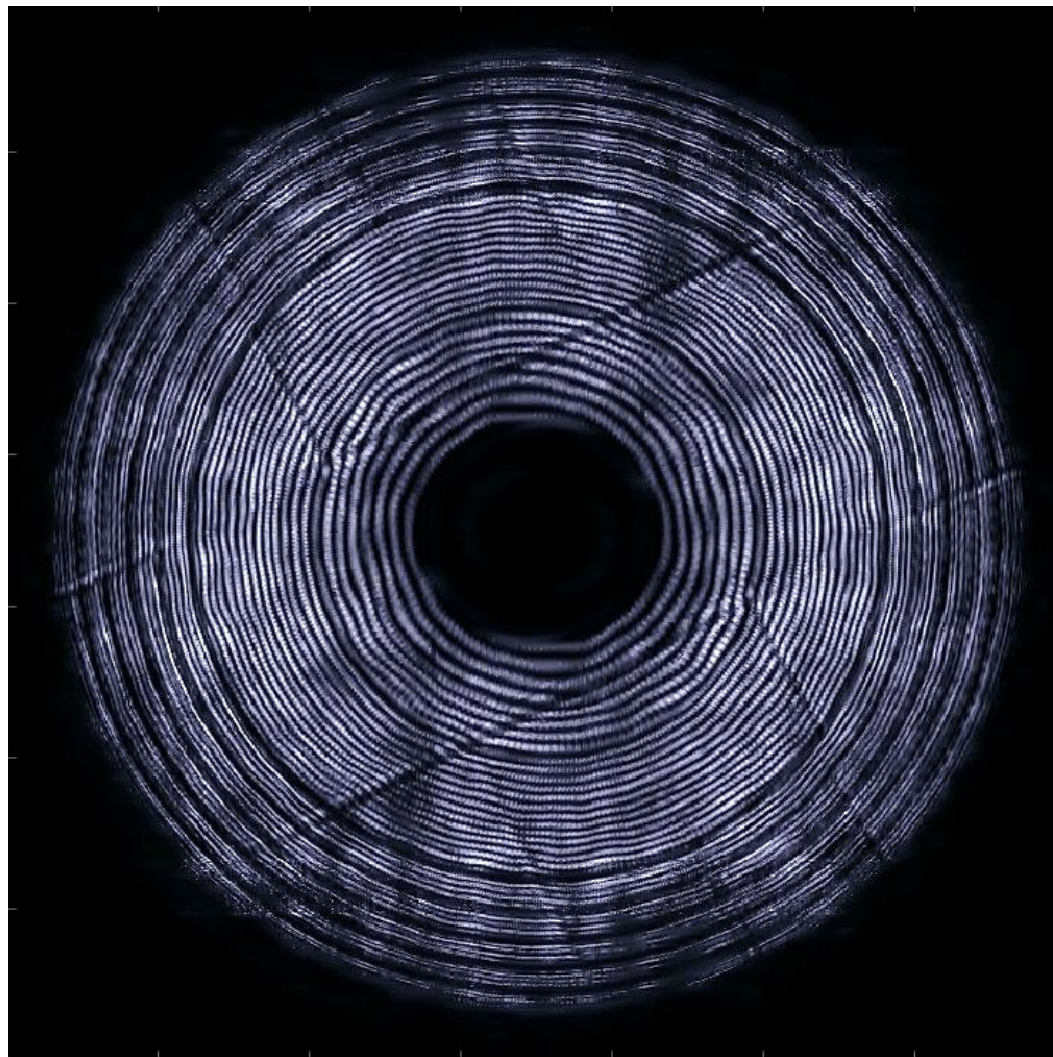
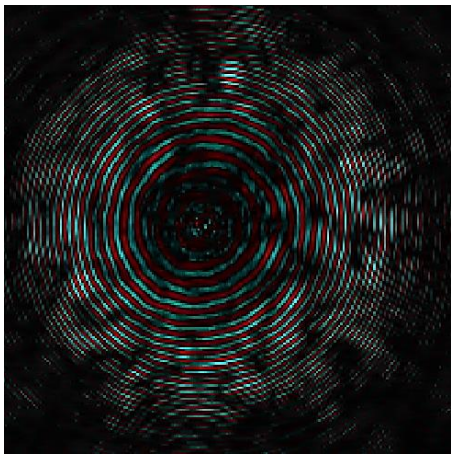
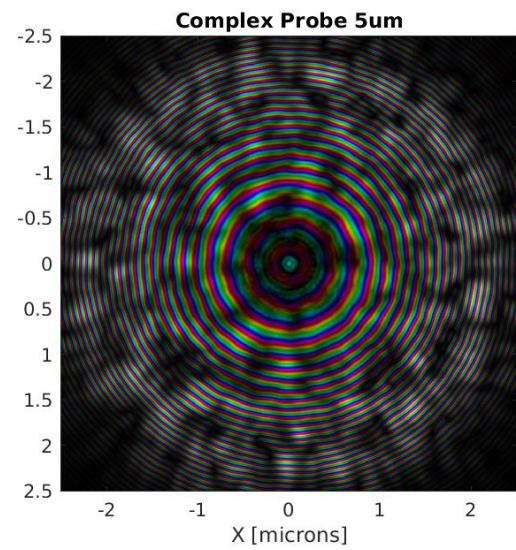
FZP2

FZP3

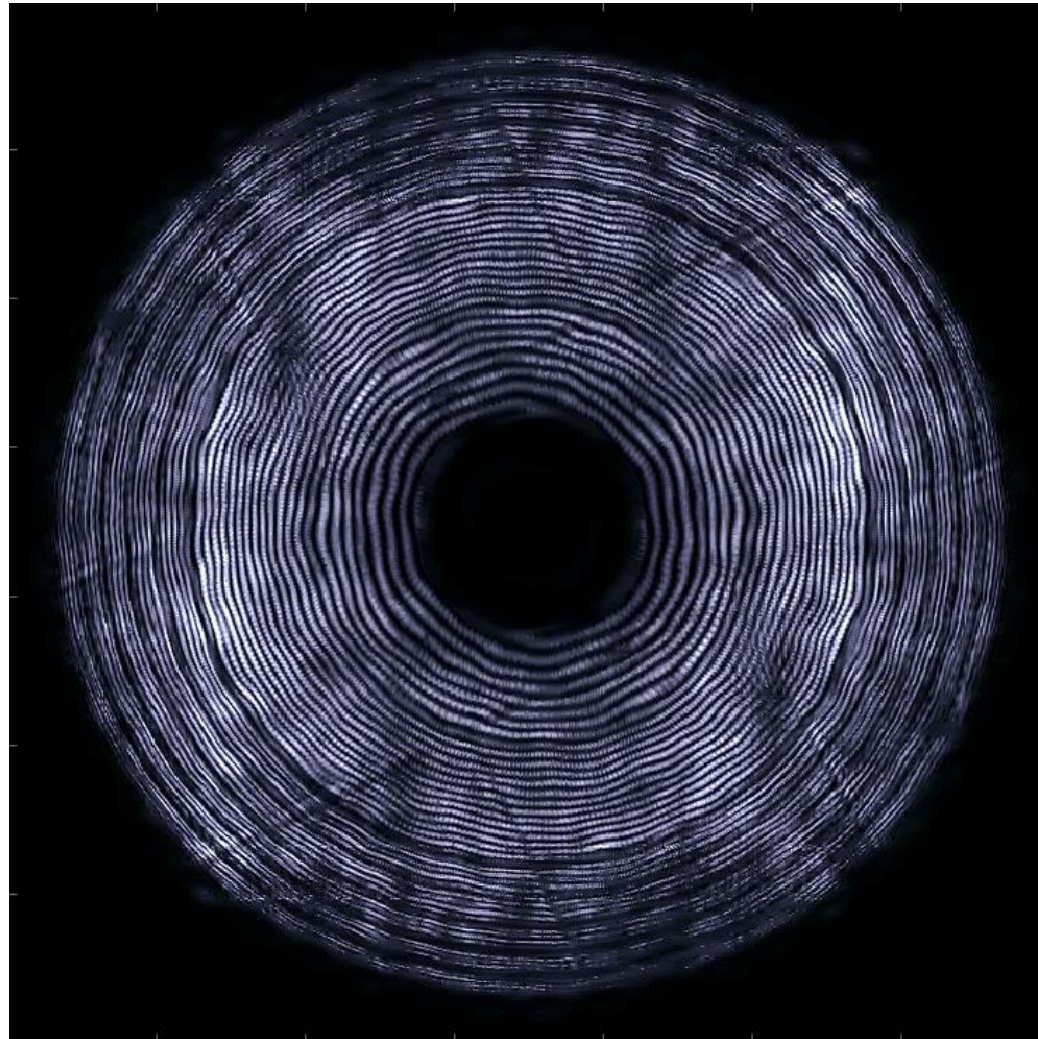
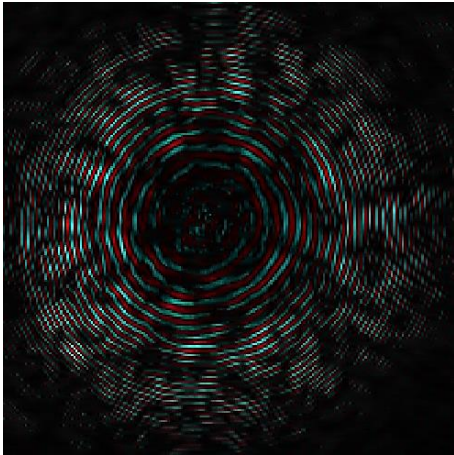
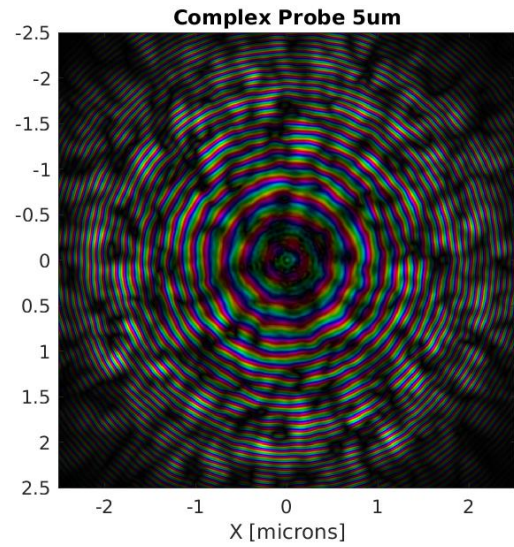
FZP4



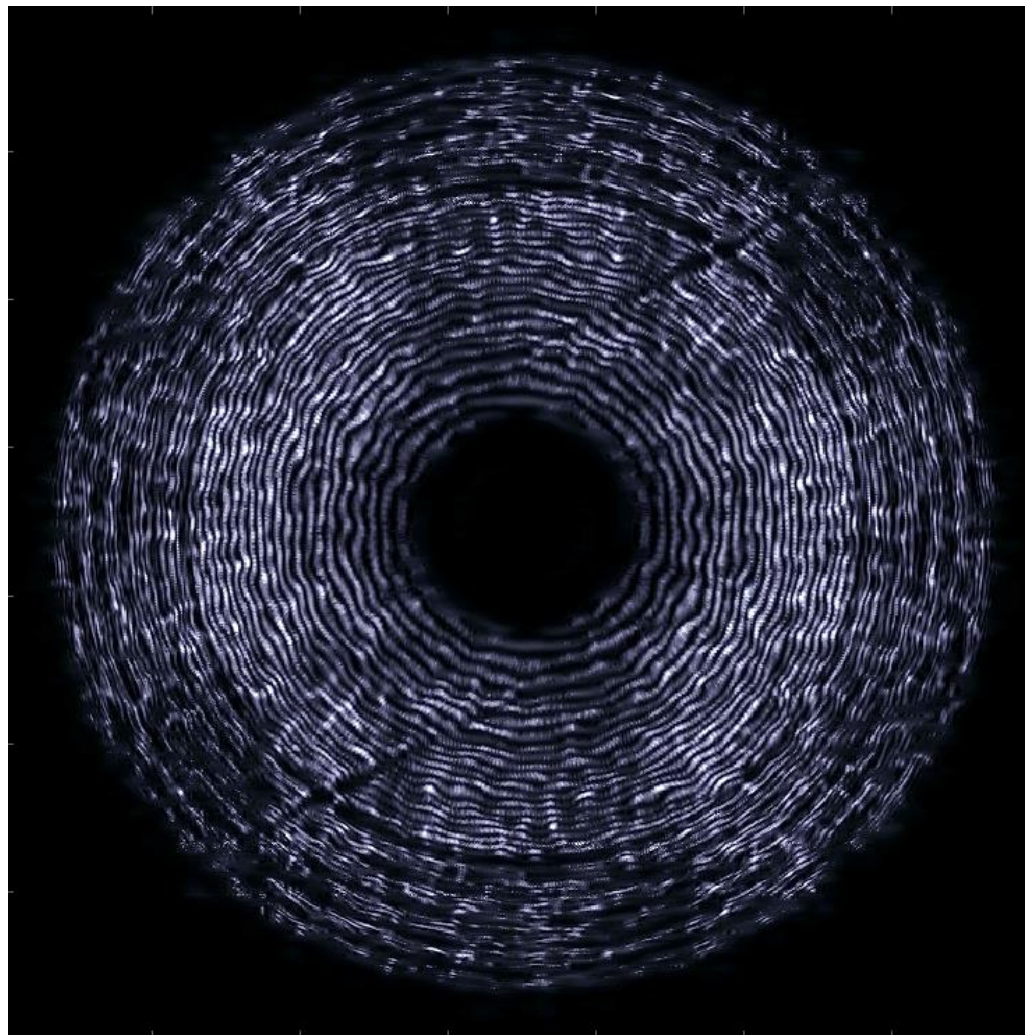
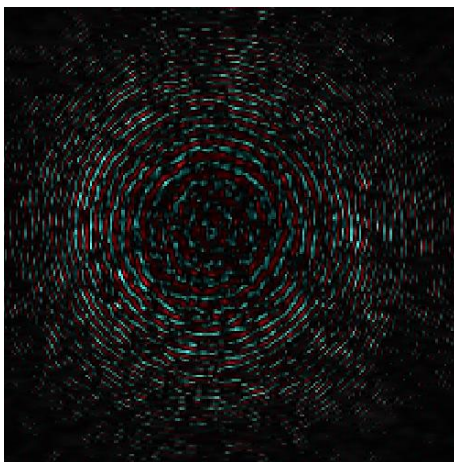
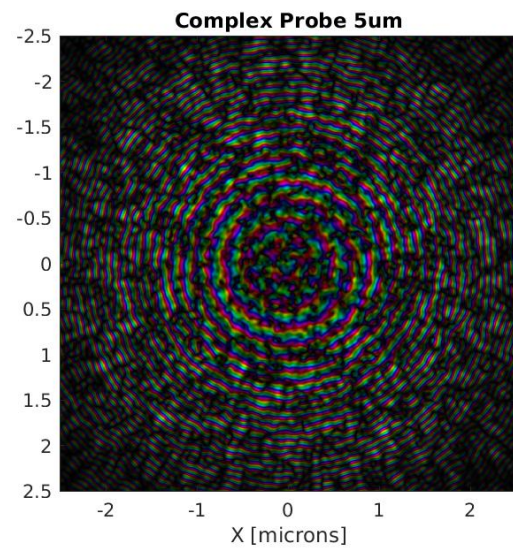
FZP1



FZP2



FZP3



FZP4